



English



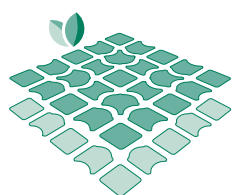
Indoor and outdoor  
riding arenas

Paddocks and open stables

Horse walkers

Lunging arena

# Horse riding



**ECORASTER**<sup>®</sup>  
E L A S T I C



**The surface reinforcement  
system for equestrian sports**

- ✓ patented safety locking system
- ✓ permanent drainage
- ✓ robust surface with good grip
- ✓ minimal maintenance





without ECORASTER® ELASTIC

## No more sludge or mud

ECORASTER® ELASTIC takes care of the problem!  
The system drainage means the riding arena is even fully usable during long periods of rainfall. Deep, muddy ground is a thing of the past thanks to ECORASTER® ELASTIC. The robust tread layer with good grip protects the tendons and joints of your horses.

The tread layer remains separate from the substructure!



*ECORASTER® - The ideal ground reinforcement system for horse riding and other equestrian sports. A neat solution to meet the highest standards – multiple certification under German TÜV quality system.*

## All-weather areas – the ideal surface all year round

Thanks to the open cells of the ECORASTER®, excess water is swiftly drained and their shape and height prevent soil compaction in the tread layer.

The space inside the individual cells serves to preserve moisture and thus protects the ground from drying out.

**Paddocks and open stables are kept free from mud and puddles. Riding arenas may be used as required, even during the more wet seasons.**

## Areas of application

Indoor and outdoor riding arenas

Paddocks and exercise areas

Open stables

Lunging arenas/round pens

Horse walkers

Tethering and mounting areas

Feeding spots

Tölt tracks

Racetracks

## Maximum load capacity 350 tonnes/m<sup>2</sup>

Thanks to the high load capacity (up to 350 tonnes/m<sup>2</sup>), ECORASTER® supports the direct load of a hoof. This ensures a high degree of safety in the riding arena, even if a horse should occasionally step through the tread layer. In paddocks, horse walkers or open stables, the tread layer is in fact more or less superfluous.

This equates to a reduction in both maintenance costs and daily cleaning efforts. Horse droppings are easily removed from the surface of the grid. Larger areas may be cleaned by machine, using a tractor.





## Elasticity enhances the ground surface

ECORASTER® ELASTIC promotes natural horse movement. Thanks to its high degree of elasticity and good grip it offers the horse an excellent reliable ground surface. The extreme impact loads from horses' hooves are especially well absorbed by ECORASTER® ELASTIC S50.

Over 200 curved bars/m<sup>2</sup> provide more elasticity. Conventional ground grids with straight bars stay rigid when loaded. The elastic bars of ECORASTER® ELASTIC always resume their original shape, are crack-proof and withstand frost (maximum -65°C) as well as extreme heat. In this way, physical movement is rendered more pleasant and the horses become more motivated. By using an appropriate tread layer, you can boost this positive effect further.

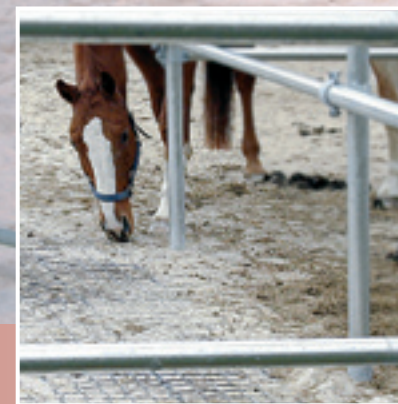


← Tread layer

← ECORASTER®

← Substructure

ECORASTER® ELASTIC – made of extremely durable and high-quality plastics, it is environmentally friendly and, thanks to its elasticity and excellent grip properties, offers the highest degree of riding comfort while treating the tendons and joints of your horses particularly gently.



## » Elastic, robust and sturdy

### The most important advantages

- no mud
- equal load on all joints thanks to an elastic and flat surface
- the tread layer remains separate from the substructure
- minimal maintenance
- high degree of elasticity
- load capacity of up to 350 tonnes/m<sup>2</sup>
- patented safety locking system
- outstanding drainage
- more than 200 elastic elements per m<sup>2</sup>
- quick and easy to install
- environmentally-friendly
- minimal hoof impact marks

### Properties

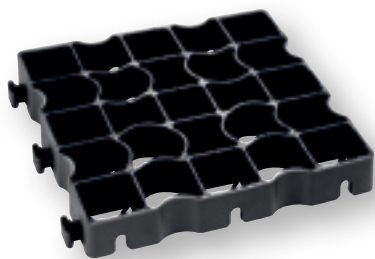
- non-slip
- elastic and robust
- crack-proof
- weatherproof
- environmentally-friendly
- 100% recyclable
- high load capacity
- ammonia resistant
- withstands frost and UV light
- does not rot



# S 50

Extra elastic  
33,3 x 33,3 x 5 cm (w x l x h)

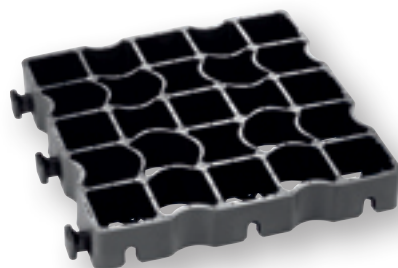
indoor riding arenas  
outdoor riding arenas  
round pens



# E 50

Powerful  
33,3 x 33,3 x 5 cm (w x l x h)

extreme loaded  
surfaces



# E 40

Universal  
33,3 x 33,3 x 4 cm (w x l x h)

large paddocks  
exercise paddocks  
washing areas  
small and medium  
riding arenas



# E 30

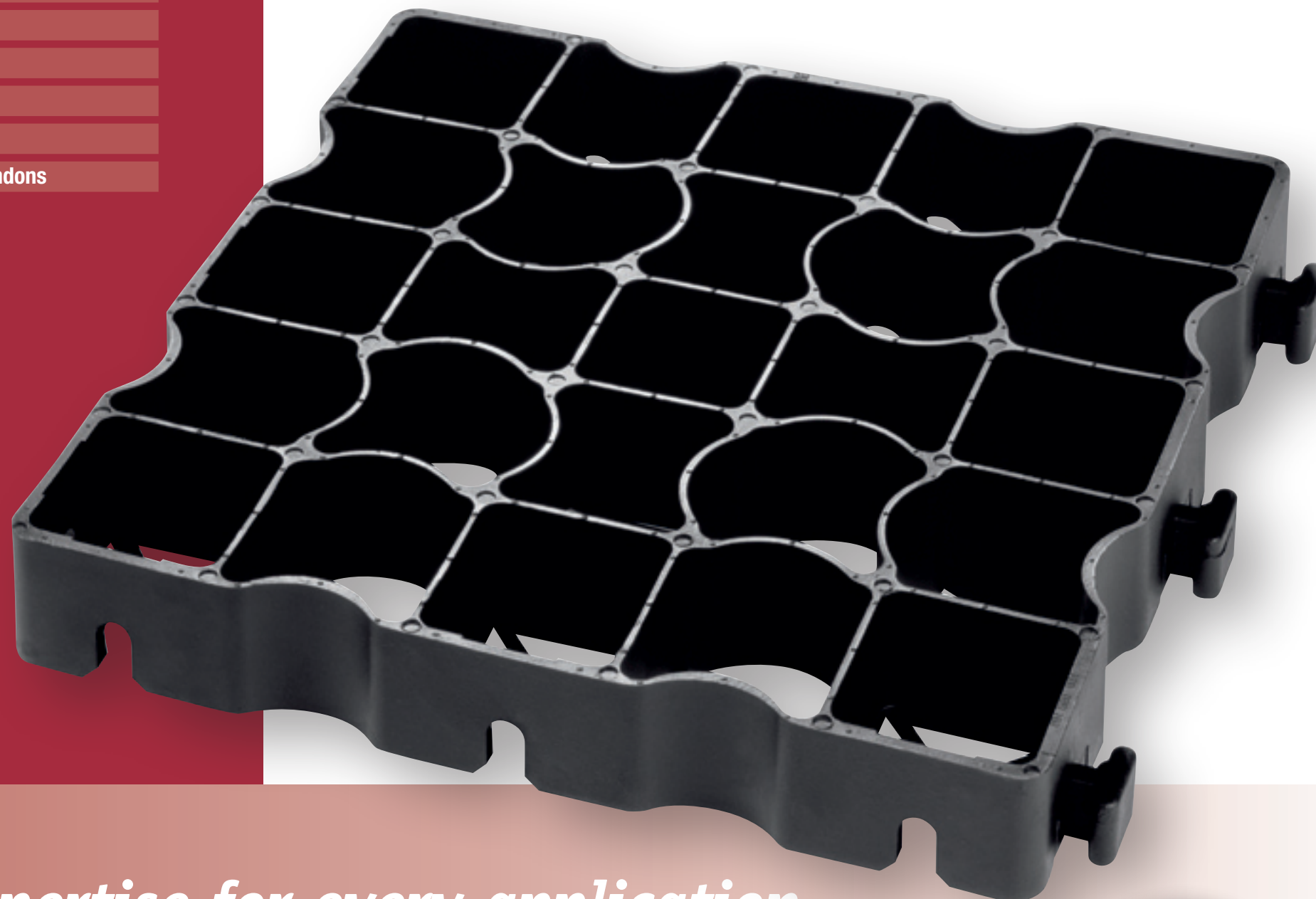
Economic  
33,3 x 33,3 x 3 cm (w x l x h)

paddocks  
Quick On Top



## System functions

- separation of tread layer and substructure
- elasticity
- permanent drainage
- stability of substructure
- area load distribution
- protection of joints and tendons

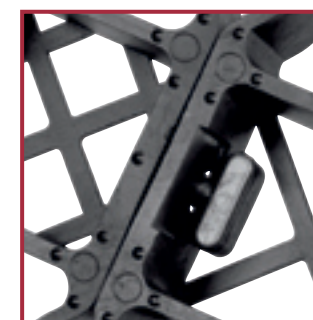


» *Expertise for every application*  
*ECORASTER® systems for all in horse riding situations*



## The patented safety locking system

The patented safety locking system (patent no. 0576939) ensures that the individual sections are securely held together. When installed, the ECORASTER® sections interlock firmly to form a completely connected surface.



Even with extreme impact loads, the patented safety locking system guarantees that no dangerous edges protrude that could cause a horse to stumble.

# Installation

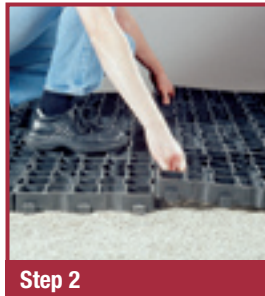
## How to install ECORASTER® quickly and without hassle!

Twelve individual sections are pre-assembled in the factory to form easy-to-install units. This means that you can lay an area of 1.33 m<sup>2</sup> in one go. Laying the grid couldn't be simpler.



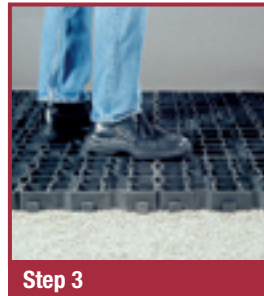
**Step 1**

Easy installation



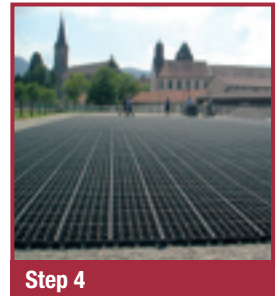
**Step 2**

Lay the whole area out and align



**Step 3**

Lock in safety interlocking system



**Step 4**

All sections are securely connected



**Step 5**

Immediately ready for load-bearing



**Step 6**

Filling the surface



**Step 7**

Sand delivery directly on the surface



**Step 8**

Distribution of the sand by machine

You can obtain more detailed information from:

Ecoraster is a registered trademark of the Purus group.  
[www.purus-plastics.de](http://www.purus-plastics.de)

